

KENYA DEMOCRACY FOR CHANGE (KDC)

Binoculars



ELECTION AND NOMINATION RULES

2024

TABLE OF CONTENTS

PART I

Rule 1:	Preamble
Rule 2:	Citation
Rule 3:	Interpretation
Rule 4:	National Elections Board
Rule 5:	Election Officers

PART II

Rule 6:	Party Electoral Colleges:
---------	---------------------------

PART

III RULES GOVERNING PARTY ELECTIONS

Rule 7:	Elections Of Party Officials
Rule 8:	Notice Of Elections
Rule 9:	Qualifications
Rule 10:	Vetting Of Party Aspirants For Party Elections
Rule 11:	Disqualification From Aspiring To Be A Party Official
Rule 12:	Conduct Of Party Elections
Rule 13:	Elections Of National Officials
Rule 14:	County Coordinating Committee
Rule 15:	Elections Of Constituency Executive Committee
Rule 16:	Ward Steering Committee Elections
Rule 17:	Polling Station Management Committee Elections
Rule 18:	Election of KDC Women League
Rule 19:	Elections of The KDC Youth League Officials
Rule 20:	Elections of The KDC Disability League Officials
Rule 21:	Timelines for Voting
Rule 22:	Procedure for Counting, Tallying And Announcing

PART IV:

THE NOMINATION OF PARTY CANDIDATES

Rule 23:	Categories of Elections Covered
Rule 24:	Announcement of Vacant Positions
Rule 25:	Affirmative and Special Interest Groups
Rule 26:	Vetting of Candidates
Rule 27:	Timelines for Process of Identification of Party Candidates
Rule 28:	Qualification of Candidates
Rule 29:	Nominations Procedures
Rule 30:	Notice for Conducting Party Nominations
Rule 31:	Party Register

Rule 32:	Procedure for Counting, Tallying and Announcing
Rule 33:	Issuance of Party Certificates
Rule 34:	Internal Dispute Resolution Mechanism
Rule 35:	Non-Competitive Nominations
Rule 36:	Nomination of Party Lists
Rule 37:	Party Lists Approval by National Executive Committee
Rule 38:	Party Code of Conduct

PART IV:

GENERAL

Rule 39:	Party Register
Rule 40:	Where Only One Candidate Is Duly Elected
Rule 41:	Grounds for Disqualification
Rule 42:	Campaign
Rule 43:	Hours of Polling
Rule 44:	Retention and Public Inspection of Documents

Schedules:

Schedule I	Elections and Nomination Structures
Schedule II	Party Elections Application Form
Schedule III	Application Form for Nomination as a Presidential Candidate
Schedule IV	Application Form for Nomination as a Party Candidate
Schedule V	Party Lists Nomination Application Form
Schedule VI	Elections Fees
Schedule VII	Candidate Nomination Fees
Schedule VIII	Party Lists Nomination Fees
Schedule IX	Code of Conduct

PART I

Rule 1: PREAMBLE

Pursuant to Article 29(iii)(h) of the Party constitution, the National Executive Committee makes the following Elections and Nomination Rules:

Rule 2: CITATION

- 2.1 These rules may be cited as the **KENYA DEMOCRACY FOR CHANGE (KDC) Election and Nomination Rules** (hereinafter “the Rules”).
- 2.2 In these rules, unless otherwise stated, the words as used carry the same meaning as prescribed in the Party Constitution.

Rule 3: INTERPRETATION

“**KDC**” means KENYA DEMOCRACY FOR CHANGE

“**Agent**” means a person duly accredited by a candidate as his/her agent.

“**Electoral College**” means Electoral College for the purpose of electing Party Officials

“**Candidate**” means a person duly cleared by the Party in accordance with these Rules to vie for nomination.

“**Candidates Vetting Committee**” means a committee established under rule 15 herein”

“**Commission**” means the Independent Electoral and Boundaries Commission of Kenya (IEBC) established under Article 88 (1) of the Constitution of Kenya.

“**Returning Officer**” means a person appointed by the NEB to preside over Party elections and nominations.

“**National Delegates Register**” means a list of Party members eligible to attend and vote at the National Delegates Convention as per the Party’s Constitution.

“**National Delegates Electoral College**” means the Electoral College convened at the National Delegates Convention for purposes of electing national officials or the nomination of Party’s Presidential candidate.

“**Nomination**” means the election of a person qualified under these Rules to contest for elections at a general or by-election (whatever the case may be) on the Party ticket.”

“**Party**” means KENYA DEMOCRACY FOR CHANGE (KDC)

“Persons with Disability” means a person with any permanent physical, sensory, mental, psychological or other impairment, condition or illness that has, or is perceived by significant sectors of the Community to have a substantial or long-term effect on an individual’s ability to carry out ordinary day-to-day activities.

“Polling Station” means the venue for voting in elections as gazetted by IEBC in the last general election, or any other Polling Station designated by the NEB.

“Presiding Officer” means a person appointed or designated under these rules by the NEB to preside over elections at a polling station.

“Register” means the register of Party members approved by the Registrar of Political Parties.

“Special Interest Groups” includes — women; persons with disabilities; youth; ethnic minorities; and marginalized communities.

“The NEB” means the National Elections Board of the Party established under Article of 7.11.1 of the Party Constitution.

“Voter” means a person validly registered by the Commission to vote at a general or bye-election and whose names are included in the Party Register.

“Poll Electoral College” means Electoral College convened at the polling station for the purpose of electing the Polling Station Management Committees.

“Ward Electoral College” means Electoral College convened at the Ward level for the purpose of electing Ward Steering Committees.

“Constituency Electoral College” means Electoral College at the Constituency level for the purpose of electing Constituency Executive Committees.

“County Electoral College” means Electoral College convened at the County level for the purpose of electing County Coordinating Committees.

“Youth” means a person who has attained the age of eighteen years; but has not attained the age of thirty-five years.

“Coalition political party” means a coalition that is registered by the Registrar as a political party;

“Direct party nomination” means the process by which a political party, through its registered members, elects its candidates for an election;

“Indirect party nomination” means the process by which a political party, through the use of delegates selected from registered members of the political party and interviews, selects its candidates for an election;

Rule 4: NATIONAL ELECTIONS BOARD

4.1 Appointment and Quorum

- i. The National Elections Board shall be appointed by the National Executive Committee and shall comprise of a Chairperson and four members.
- ii. The quorum shall be at least three members present
- iii. Provided that one third (1/3) of the members shall be of either gender
- iv. In appointing the members of the National Elections Board, the National Executive Council must ensure that there is regional balancing and ethnic diversity.
- v. There shall be at least one member representing the Special Interest Groups
- vi. The National Elections Board shall appoint and delegate its powers to the County/ Constituency and Ward Returning Officers, presiding officers who shall be under the overall supervision of the County Returning Officers.

4.2 Eligibility Criteria for National Elections Board

- i. The members of the Board shall be respected and knowledgeable persons of high integrity who do not hold any elective position in the party and at least one third shall be of either gender.
- ii. The members of the Board shall serve for a term of five years and shall be eligible for reappointment for a further term subject to a maximum of two consecutive terms.
- iii. A person shall qualify to be appointed as a Chairperson of the National Elections Board if the person
 - a. is a member of the Party
 - b. Holds a degree from a recognized university
 - c. Is qualified to hold the office of Judge of the high court
 - d. meets the requirements of chapter six of the Constitution of the Republic of Kenya

4.3 Rights and Duties of the National Elections Board

- i. The Rights and Duties of the National Elections Board shall be;
 - a. The National Elections Board shall plan, organize, direct, conduct, supervise and/or coordinate all Party elections and nominations of party candidates.
 - b. To ensure a free and fair electoral process.

- c. The vetting of all candidates aspiring for Party election or nomination in accordance with provisions of the Constitution of the Republic of Kenya, applicable electoral Laws, Party Constitution, Party Nomination and Election Rules and the Party Code of Conduct,
- d. Appointment of County Returning Officers, Constituency Returning Officers, Polling and Tallying Clerks,
- e. Accreditation of election observers,
- f. Receiving election results from Returning Officers.
- g. Taking all necessary measures to ensure Party elections and nominations are transparent, peaceful, free and fair.
- h. Devise or formulate rules of procedure for the County Election Disputes Appeals Tribunal.
- i. Should not be Partisan in elections of Party Officials or those seeking to be nominated as a Party Candidate

4.4 The National Elections Board may with the written approval of the National Executive Committee (NEC) grant a candidate a non-competitive nomination.

RULE 5: ELECTION OFFICERS

The National Elections Board shall appoint election officers who shall be Party members, knowledgeable and of high integrity but do not hold any elective position in the party

5.1 RETURNING OFFICERS

There shall be County and Constituency Returning Officers, appointed by the National Elections Board. Upon a resolution by the National Executive Committee, the National Elections Board shall advertise a Notice of invitation of not less than seven days (7 days) in at least two media platforms with National circulation for Party members who are interested for nominations as election officers

5.2 GENERAL DUTIES AND RESPONSIBILITIES OF RETURNING OFFICERS:

- i. The General Duties and responsibilities of Returning Officers shall include but not limited to:
 - a) Carrying out briefings or trainings for election officers on the proper conduct of the Party elections in accordance with the Party's Constitution and Elections and Nomination Rules,
 - b) Ensuring that requisite logistics are in place at the elections venue for a free and fair elections, including-
 - i. Availing sufficient and relevant voting materials and equipment, and

- ii. Ensuring that there exists adequate security during elections,
- c) Supervising other election officers to ensure a level play field,
- d) Count, tall and announce election results promptly and accurately,
- e) Compile and submit results of the elections to the National Elections Board, and
- f) Undertaking any other responsibility or duty that might lawfully be assigned to them by the National Elections Board.

5.3 CONSTITUENCY RETURNING OFFICERS

- i. The National Elections Board shall appoint a constituency returning officer for each constituency
- ii. The Duties and Roles of the constituency returning officer shall be;
 - a) To conduct Party elections and nominations at the constituency level;
 - b) To count, tally, announce and declare the results from the Electoral Colleges in constituency for the nomination of the Party candidate for member of the National Assembly and Members Of The County Assembly; and Party Election Officials.
 - c) To relay the collated results to the National Elections Board
 - d) Any other functions as may be assigned by the National Elections Board.

5.4 COUNTY RETURNING OFFICERS

- i. The National Elections Board shall appoint county returning officers to be responsible for;
- ii. Duties and Roles of the County Returning Officer shall be;
 - a) To conduct Party elections and nominations at the County Level in respect of County Party Officials and Governor, County Member of the National Assembly (Woman Representative) and Member of the Senate at the County Electoral College.
 - b) To count, tally, announce and declare the results from the Electoral Colleges and transmit to the National Elections Board
 - c) Maintain and preserve all election materials and returns and deliver the same to the National Elections Board at the conclusion of the nominations, and/or Party elections.
 - d) Any other functions as may be assigned by the National Elections Board.

5.5 PRESIDING OFFICERS

- i. There shall be Presiding Officers appointed by the County Returning Officer and shall be in charge of polling and tallying in Polling and Ward Electoral colleges.
- ii. The roles of the Presiding Officers shall:
 - a) Under general direction of respective Returning Officers be in charge of election and nomination exercise within Electoral Colleges at the polling or ward level. ,
 - b) Co-ordinate and direct Polling and Counting Clerks;
 - c) Submit election results to the respective Returning Officer.
 - d) Ensure that there is ample security and conducive environment.
 - e) Ensure that voting process is free and fair;
 - f) free from all forms of violence, intimidation, bribery, discrimination, manipulation or coercion,
 - g) Protect the rights of all Electoral College delegates including Special Interest groups and the Persons with Disability.
 - h) Carry all tasks and duties as may be lawfully assigned to them by respective Returning Officers.

5.6 Polling and Counting Clerks

There shall be Polling and Tallying Clerks in each respective Electoral College, as selected by the Returning Officers in consultation with the National Elections Board.

5.7 Training and Remuneration of Election Officers

- i. The Party shall train all elections officers in accordance with the provisions of these Rules, Party Constitution, Constitution of the Republic of Kenya, the Elections Act, Political Parties Act and any other relevant written law.
- ii. The elections officials will be remunerated for the services rendered provided that they are not party officials

PART II

Rule 6: PARTY ELECTORAL COLLEGES:

- i. The Party in conducting its elections and nominations shall be by indirect party nomination
- ii. There is hereby established Electoral Colleges as follows:
 - a) National Electoral College
 - b) County Electoral College
 - c) Constituency Electoral College
 - d) Ward Electoral College
 - e) Polling Station Electoral College
- iii. The quorum for conducting elections and nominations at all Electoral Colleges shall be at least fifty percent of the members eligible to attend and vote.
- iv. Each Candidate in the Party Elections or Nominations shall be allowed to have not more than two agents

PART III

RULES GOVERNING PARTY ELECTIONS

Rule 7: ELECTIONS OF PARTY OFFICIALS

- i. Party elections shall be conducted for the following organs of the Party-
 - a. National Officials
 - b. County Coordinating Committee
 - c. Constituency Executive Committee
 - d. Ward Steering Committee
 - e. Polling Station Management Committee
 - f. **KDC** Women League (KDCWL)
 - g. **KDC** Youth League (KDCYL)
 - h. **KDC** Disability League (KDCYL)

Rule 8: NOTICE OF ELECTIONS

National Elections Board shall issue a notice of not less than Twenty-One (21) days with respect to all Party elections due and it shall publish such notice in at least two media platforms with National circulation.

Rule 8.1 PROCEDURE FOR DECLARING INTEREST

Any member of the party interested in vying for any post within the party shall apply to the national election board for consideration

Rule 9: QUALIFICATIONS

An aspirant seeking to be elected into office shall:

- i. Be a member of KENYA DEMOCRACY FOR CHANGE (KDC)
- ii. Be committed to the ideals and core values of the Party
- iii. Be a fully paid-up member; in the case of those seeking for Chairperson at the National office, County and Constituency shall be Gold members and Silver members for Ward, and Ordinary member at the Poll Stations.
- iv. Demonstrate having participated in party activities for at least six months prior to their application for election.
- v. Complete and return within the time stipulated by the National Elections Board the Party Code of Conduct as provided for in schedule IX of these rules.
- vi. Be a delegate by virtue of having been elected from the Grassroots.
- vii. Be an automatic delegate by virtue of being elected as **KDC** Members of Parliament or Governors.
- viii. Be present during the meeting at which the election is conducted.
- ix. Be registered as a voter in the respective electoral college for which they seek election,

- x. Has duly filled the Ethics and Anti-Corruption Commission Self Declaration Form
- xi. Meet the provisions of Chapter Six of the Constitution of the Republic of Kenya

RULE 10: VETTING OF PARTY ASPIRANTS FOR PARTY ELECTIONS

10.1 The National Elections Board shall vet aspirants in accordance with the Party Constitution, the Constitution of the Republic of Kenya, The Political Parties Act, The Elections Act, and Party Election and Nomination Rules and all other relevant laws and rules;

10.2 In vetting an aspirant for the Party elections the National Elections Board shall take into account the following:

- i. Demonstrated loyalty to the party, its leadership and organs.
- ii. The contribution of the aspirant to the Party activities, programs and ideology.
- iii. Ability and capacity to represent the particular electoral college for which the aspirant is contesting.
- iv. Ability to articulate and propagate Party policies, programs and ideology.

10.3 **AFFIRMATIVE AND SPECIAL INTEREST GROUP ASPIRANTS**

The national elections board shall encourage more women and special interest groups to participate in the elections by discounting the Election Application fees as provided for in schedule VI of these rules.

10.4 **DOCUMENTS REQUIRED FOR ASPIRANTS**

An aspirant seeking party elections shall furnish the following documents within Seven (7) days upon the National Elections Invitation notice:

- i. Duly completed Elections Applicable Form in duplicate
- ii. Certified copy of national identity card or Passport,
- iii. Certified copy of the Party's membership card
- iv. Duly executed Code of Conduct form
- v. Evidence of active participation in Party activities three months prior to the application.
- vi. Self-declaration form from EACC

10.5 **TIMELINES FOR PROCESS OF IDENTIFICATION OF CANDIDATE**

The National Elections Board shall vet and approve the successful candidates at least Twenty-One (21) days before the Party elections.

10.4 TERMS OF OFFICE OF THE ELECTED PARTY LEADERS

The elected party officials shall serve for period of five years.

RULE 11: DISQUALIFICATION FROM ASPIRING TO BE A PARTY OFFICIAL

A party member shall be disqualified from being elected as a Party Official if the member:-

- i. Is an undischarged Bankrupt;
- ii. as Been Convicted Of A Criminal Offence And Sentenced To Imprisonment For A Period Of Not Less Than Six Months;
- iii. Has Been Suspended For A Period Of Six Months For Violating The Code Of Conduct Of The Political Party; Or
- iv. Has contravened the provisions of Chapter Six of the Constitution.
- v. Is a State Officer or other Public Officer
- vi. Is disqualified from holding public office under the Constitution of the Republic of Kenya, the Political Parties Act or any other written law

RULE 12: CONDUCT OF PARTY ELECTIONS

The National Elections Board shall conduct Party Elections in the following organs of the Party:

- i. National Delegates Convention,
- ii. County Coordinating Committee,
- iii. Constituency Coordinating Committee
- iv. Ward Steering Committees,
- v. Poll Station Management Committee
- vi. KDC Women League County Coordinating Committee
- vii. KDC Women League Constituency Coordinating Committee,
- viii. KDC Women League Ward Steering Committees
- ix. KDC Women League Poll Station Management Committee
- x. KDC Youth League County Coordinating Committee,
- xi. KDC Youth League Constituency Coordinating Committee,
- xii. KDC Youth League Ward Steering Committees
- xiii. KDC Youth League Poll Station Management Committee
- xiv. KDC Disability League County Coordinating Committee,
- xv. KDC Disability League Constituency Coordinating Committee,
- xvi. KDC Disability League Ward Steering Committees
- xvii. KDC Disability League Poll Station Management Committee

RULE 13: ELECTIONS OF NATIONAL OFFICIALS

The National officials shall be elected by the National Delegates Electoral College convened in accordance with the provisions of the Party Constitution.

13.1 Eligibility of Delegates:

The National Elections Board shall ensure that only delegates whose names appear in the National Delegates Convention Register and present at the Convention shall be eligible to vote.

13.2 Quorum:

- i. The National Elections Board shall ensure that there is a quorum before the commencement of business of elections in accordance with the Party Constitution.
- ii. The quorum for conducting elections at the National Delegates Electoral College shall be at least fifty percent of the members eligible to attend and vote

13.3 Mode of Voting:

Elections at the National Delegates Electoral College shall be by consensus, secret ballot or any other method approved by the delegates present.

13.4 Assumption of Office:

Persons elected as national officials shall assume office upon declaration of results.

13.5 Custody of Election Materials

The National Elections Board shall immediately after the announcement of the results surrender all election documents and materials to the National Secretariat for safe custody for a period of three months.

RULE 14: COUNTY COORDINATING COMMITTEE

14.1 The County Coordinating Committee shall be composed of the following elected officials;

- i. The County Coordinating Chairperson
- ii. The County Deputy Coordinating Chairperson
- iii. The County Coordinating Secretary
- iv. The County Coordinating Treasurer
- v. The County Coordinating Organizing Secretary
- vi. The County **KDC** Women Leader
- vii. The County **KDC** Youth Leader
- viii. The County Secretary Special Interests Group
- ix. The County Secretary Person With Disability

Provided that one third of the members shall be of either gender

14.2 The officials elected at the Constituency Executive Committee shall form the County Electoral College for the purpose of the elections of the County Coordinating Committee.

- 14.3** On the date designated for County Coordinating Committee elections all the County Electoral College Delegates shall assemble at a designated place within the County as shall be set out by the County Returning Officer and vote by secret ballot or any other method acceptable by the delegates present and voting.
- 14.4** The County Returning Officer shall count, tally and announce the results and transmit to the National Elections Board.

RULE 15: ELECTIONS OF CONSTITUENCY EXECUTIVE COMMITTEE

- 15.1** The Constituency Executive Committee shall be composed of the following elected officials:
- i. Constituency Chairperson,
 - ii. Constituency Deputy Chairperson,
 - iii. Constituency Secretary,
 - iv. Constituency Treasurer,
 - v. Constituency Organizing Secretary,
 - vi. Constituency Woman Leader Women
 - vii. Constituency Youth Leader
 - viii. Constituency Secretary Special Interest Groups Representative
 - ix. Constituency Secretary for Persons with Disability Representative

Provided that one third of the members shall be of either gender

15.2 CONSTITUENCY ELECTORAL COLLEGE

- i. The officials elected at the Ward Steering Committee shall form the Constituency Electoral College for the purposes of elections of the Constituency Executive Committee.
- ii. On the date designated for Constituency Executive Committee Elections all the Constituency Electoral College Delegates shall assemble at a designated place within the Constituency as shall be set out by the County Returning Officer and vote by secret ballot or any other method acceptable by the delegates present and voting.
- iii. The Constituency Returning Officer shall tally and announce the results and submit to the County Returning Officer for transmission to the National Elections Board.

RULE 16 WARD STEERING COMMITTEE ELECTIONS

16.1 Each Ward Steering Committee shall be composed of the following elected officials:

- i. Ward Chairperson,
- ii. Ward Deputy Chairperson,
- iii. Ward Secretary,
- iv. Ward Treasurer,
- v. Ward Organizing Secretary,
- vi. Ward Woman Leader
- vii. Ward Youth Leader
- viii. Ward Secretary Special Interest Groups Representative
- ix. Ward Secretary for Persons with Disability Representative

Provided that one third of the members shall be of either gender

16.2 WARD ELECTORAL COLLEGE

- i. The Delegates elected at the Polling Station Management Committees shall form the Ward Electoral College for the purpose of electing the Ward Steering Committee.
- ii. On the date designated for the Ward Steering Committee elections, all the ward electoral college delegates shall assemble at designated places within the Ward as shall be set out by the Constituency Returning Officer and vote by secret ballot or any other method acceptable by the delegates present and voting.
- iii. The Presiding Officer shall tally and announce the results thereof and submit to the Constituency Returning Officer and transmit them to the County Returning Officer and the National Elections Board

RULE 17 POLLING STATION MANAGEMENT COMMITTEE ELECTIONS

17.1: Each Polling Station Management Committee shall be composed of the following elected officials:

- i. Poll Chairperson,
- ii. Poll Deputy Chairperson,
- iii. Poll Secretary,
- iv. Poll Treasurer,
- v. Poll Organizing Secretary,
- vi. Poll Woman Leader Women,
- vii. Poll Youth Leader ,
- viii. Poll Secretary Special Interest Groups Representative,
- ix. Poll Secretary for Persons with Disability Representative

Provided that one third of the members shall be of either gender

17.2 POLLING STATION ELECTORAL COLLEGE

- i. All the **KENYA DEMOCRACY FOR CHANGE (KDC)** party members registered in that ward polling station shall form the polling station electoral college.
- ii. On the date designated for the Polling Station Management Committee elections, all **KENYA DEMOCRACY FOR CHANGE (KDC) members** shall assemble at the Ward Polling Stations and vote by secret ballot or any other method acceptable by the delegates present.
- iii. The Presiding Officer shall tally and announce the result thereof and thereafter submit to the Constituency Returning Officer.

RULE 18: ELECTION OF KDC WOMEN LEAGUE

18.1 The organization of the KDC Women League shall run from the Polling Station, Ward, Constituency, County and National Levels. The elections of the Women League Officials shall be conducted by the National Elections Board at each level

18.2 At the Polling Station for the elections of the poll women league management committee all women members of the party eligible to vote in that polling station, shall assemble and elect by secret ballot or any other method acceptable to the members present, the following officials.

- i. Chairperson
- ii. Deputy Chairperson
- iii. Secretary
- iv. Treasurer
- v. Organizing Secretary

18.3 The officials of the Women League at the Ward, Constituency, County and National Level shall be elected simultaneously and in the same manner as their counterpart mainstream party officials provided they shall be composed of the following officials;

- i. Chairperson
- ii. Deputy Chairperson
- iii. Secretary
- iv. Treasurer
- v. Organizing Secretary

Rule 19: ELECTIONS OF THE KDC YOUTH LEAGUE OFFICIALS

19.1 The organization of the KDC Youth League shall run from the Polling Station, Ward, Constituency, County and National Levels. The elections of the Youth League Officials shall be conducted by the National Elections Board at each level.

19.2 At the Polling Station for the elections of the poll youth league management committee all youth members of the party eligible to vote in that polling station, shall assemble and elect by secret ballot or any other method acceptable to the members present, the following officials.

- i. Chairperson
- ii. Deputy Chairperson
- iii. Secretary
- iv. Treasurer
- v. Organizing Secretary

19.3 The officials of the Youth League at the Ward, Constituency, County and National Level shall be elected simultaneously and in the same manner as their counterpart mainstream party officials provided they shall be composed of the following officials;

- i. Chairperson
- ii. Deputy Chairperson
- iii. Secretary
- iv. Treasurer
- v. Organizing Secretary

RULE 20: ELECTIONS OF THE KDC DISABILITY LEAGUE OFFICIALS

20.1 The organization of the KDC Disability League shall run from the Polling Station, Ward, Constituency, County and National Levels. The elections of the Disability League Officials shall be conducted by the National Elections Board at each level

20.2 At the Polling Station for the elections of the Poll Disability league management committee all youth members of the party eligible to vote in that polling station, shall assemble and elect by secret ballot or any other method acceptable to the members present, the following officials.

- i. Chairperson
- ii. Deputy Chairperson
- iii. Secretary
- iv. Treasurer
- v. Organizing Secretary

20.3 The officials of the Disability League at the Ward, Constituency, County and National Level shall be elected simultaneously and in the same manner as their counterpart mainstream party officials provided they shall be composed of the following officials;

- i. Chairperson
- ii. Deputy Chairperson
- iii. Secretary
- iv. Treasurer
- v. Organizing Secretary

RULE 21: TIMELINES FOR VOTING

The National Elections Board shall ensure that on the date designated for elections, each electoral college shall assemble by 0930am and the voting shall be concluded by 0400pm.

RULE 22: PROCEDURE FOR COUNTING, TALLYING AND ANNOUNCING

The Returning Officer at each electoral college shall count, tally and announce the results to the Electoral College before submitting to the National Elections Board.

PART IV

THE NOMINATION OF PARTY CANDIDATES

RULE 23: CATEGORIES OF ELECTIONS COVERED

These rules govern the nomination of Party candidates in respect of any nomination, for Presidential, Gubernatorial, Parliamentary and County Assembly members.

RULE 24: ANNOUNCEMENT OF VACANT POSITIONS

- 24.1** Upon a resolution by the National Executive Committee, the National Elections Board shall advertise a Notice of invitation of not less than twenty one days (21) in at least two media platform with National circulation for Party nominations in Presidential, Gubernatorial, Member of the Senate, Member of the National Assembly, County Member of Parliament (Woman Representative) and Member of the County Assembly.
- 24.2** National Elections Board shall receive the Nomination Application Forms as prescribed in Schedule IV. The national election board upon receipt of the application shall process in accordance with party election and nomination rules

RULE 25: AFFIRMATIVE AND SPECIAL INTEREST GROUPS

The national elections board shall encourage more women and special interest groups to participate in the elections by discounting the Nomination Application fees as provided for in schedule IV of these rules.

RULE 26: VETTING OF CANDIDATES

- 26.1** The National Elections Board shall vet candidates in accordance with the Party Constitution, the Constitution of the Republic of Kenya, The Political Parties Act, 2011, The Elections Act, 2011, The County Government Act, 2012, and Party Election and Nomination Rules and all other relevant laws and rules;
- 26.2** In vetting a candidate the National Elections Board shall take into account the following:
- i Demonstrated loyalty to the party, its leadership and organs.
 - ii The contribution of the candidate to the Party activities and ideology.
 - iii Ability to represent the area for which the candidates seek nomination.
 - iv Ability to articulate and propagate Party policies and ideology.
- 26.3** An aspirant shall furnish the following documents:
- i Duly completed Party Election Application form in duplicate
 - ii Certified copy of national identity card or Passport,
 - iii Non- refundable fee as per the Election fees table in Schedule VII of these rules.

- iv A copy of Party membership Certificate

RULE 27: TIMELINES FOR PROCESS OF IDENTIFICATION OF PARTY CANDIDATES

The National Elections Board shall vet and approve the successful candidates at least Twenty One (21) days before the Party elections.

RULE 28: QUALIFICATION OF CANDIDATES

28.1 NOMINATIONS FOR MEMBER OF THE COUNTY ASSEMBLY

- (i) Any party member seeking nomination for elections as a Member of the County Assembly shall fulfill the following requirements:

- a. Be a Silver member of the Party,
- b. Be registered as a voter in the Ward for which they seeks election,
- c. Demonstrate active participation in Party programs three months prior to seeking nomination, provided National Executive Committee may for good cause, which shall be specifically documented, exempt an applicant from this requirement, subject to any conditions it may deem fit,
- d. Meet the minimum requirements for County Assembly Candidates as may be set out by the Elections Act and the Independent Electoral and Boundaries Commission.

- (ii) **An applicant for nomination shall furnish the following documents:**

- a) Duly completed Nomination Form in duplicate
- b) Certified copy of national identity card or Passport,
- c) Non- refundable fee as per schedule VII paid to **KENYA DEMOCRACY FOR CHANGE (KDC)** by a Bankers Cheque or deposited in the Party account
- d) Certified copy of the Party's Gold membership certificate
- e) Duly executed Code of Conduct and Pledge of Commitment Form
- f) Evidence of active participation in Party activities three months prior to the application,
- g) Self-declaration form from EACC

(iii) DISQUALIFICATION FROM NOMINATION AS A CANDIDATE FOR ELECTION AS A MEMBER OF THE COUNTY ASSEMBLY

A person is disqualified from being nominated as a candidate for election as a Member of a County Assembly if the person:-

- a. Is a State Officer or other Public Officer other than a Member of County Assembly,
- b. Has at any time within the five years immediately before the date of election held office as a member of the Independent Electoral Boundaries Commission or any Election Commission,
- c. Is of unsound mind,
- d. Is an undischarged bankrupt,
- e. Is serving a sentence of imprisonment of at least six months, or
- f. Has been found, in accordance with any law, to have misused or abused a State Office or Public Office or to have contravened any provision of Chapter Six of the Constitution of Kenya
- g. Is found to have planned, sponsored or participated in any violent activity intended to disrupt party nominations.

28.2 NOMINATIONS FOR MEMBER OF NATIONAL ASSEMBLY:

- (i) A person seeking nomination for elections shall fulfill the following requirements:
 - a. Be a Gold member of the Party,
 - b. Be registered as a voter in the Constituency for which they seeks election,
 - c. Demonstrate active participation in Party programs three months prior to seeking nomination, provided National Executive Committee may for good cause, which shall be specifically documented, exempt an applicant from this requirement, subject to any conditions it may deem fit,
 - d. Meet the minimum requirements for Member of the National Assembly as may be set out by the Elections Act and the Independent Electoral and Boundaries Commission.
 - e. Is proficient in both English and Kiswahili languages,
- (ii) Candidates in respect of Parliamentary nominations shall be required to provide the following:
 - a. Duly completed Nomination Form in duplicate
 - b. Certified copy of national identity card or Passport,
 - c. Non- refundable fee as per provisions of schedule VII contained in the rules herein paid to **KENYA DEMOCRACY FOR CHANGE (KDC)** by a Bankers Cheque or deposited in the Party account
 - d. Certified copy of the Party's Gold membership certificate
 - e. Duly executed Code of Conduct and Pledge of Commitment Form
 - f. Evidence of active participation in Party activities three months prior to the application,

(iii) DISQUALIFICATION FROM NOMINATION AS A CANDIDATE FOR ELECTION AS A MEMBER OF NATIONAL ASSEMBLY

A person is disqualified from being nominated as a Member of National of Assembly if the person:

- a. Is a State Officer or other Public Officer other than a Member of Parliament,
- b. Has, at any time within the five years immediately preceding the date of the election, held office as a member of the Independent Electoral Boundaries Commission,
- c. Is of unsound mind,
- d. Is an undischarged bankrupt,
- e. Is subject to a sentence of imprisonment of at least six months as at the date of nomination as a candidate,
- f. Is found, in accordance with any Law to have misused or abused a state office or public office or in any way to have contravened the provisions of Chapter Six of the Constitution of Kenya.
- g. Is found to have planned, sponsored or participated in any violent activity intended to disrupt party nominations.

28.3 NOMINATIONS FOR COUNTY MEMBER OF THE NATIONAL ASSEMBLY (WOMAN REPRESENTATIVE):

(i) A person seeking nomination for County Member of the National Assembly (Woman Representative) shall fulfill the following requirements:

- a. Be a Gold member of the Party,
- b. Be registered as a voter in the County for which they seek election,
- c. Demonstrate active participation in Party programs three months prior to seeking nomination, provided National Executive Committee may for good cause, which shall be specifically documented, exempt an applicant from this requirement, subject to any conditions it may deem fit,
- d. Meet the minimum requirements for County Member of the National Assembly as may be set out by the Elections Act and the Independent Electoral and Boundaries Commission.
- e. Is proficient in both English and Kiswahili languages,

(ii) Candidates in respect of County Member of the National Assembly (Woman Representative) nominations shall be required to provide the following:

- a. Duly completed Nomination Form in duplicate
- b. Certified copy of national identity card or Passport,

- c. Non- refundable fee as per provisions of schedule VII contained in the rules herein paid to **KENYA DEMOCRACY FOR CHANGE (KDC)** by a Bankers Cheque or deposited in the Party account
- d. Certified copy of the Party's Gold membership certificate
- e. Duly executed Code of Conduct and Pledge of Commitment Form
- f. Evidence of active participation in Party activities three months prior to the application,

(iii) DISQUALIFICATION FROM NOMINATION AS A CANDIDATE FOR ELECTION AS COUNTY WOMAN REPRESENTATIVE:

A person is disqualified from being nominated as County Member of the National Assembly (Woman Representative) if the person:

- a. Is a State Officer or other Public Officer other than a Member of Parliament,
- b. Has, at any time within the five years immediately preceding the date of the election, held office as a member of the Independent Electoral Boundaries Commission,
- c. Is of unsound mind,
- d. Is an undischarged bankrupt,
- e. Is subject to a sentence of imprisonment of at least six months as at the date of nomination as a candidate,
- f. Has not been a citizen of Kenya for at least the ten years immediately preceding the date of the election, or
- g. Is found, in accordance with any Law to have misused or abused a state office or public office or in any way to have contravened the provisions of Chapter Six of the Constitution of Kenya.
- h. Is found to have planned, sponsored or participated in any violent activity intended to disrupt party nominations

28.4 NOMINATIONS FOR MEMBER OF THE SENATE

- (i)** A person seeking nomination for member of the Senate shall fulfill the following requirements:
 - a. Be a Gold member of the Party,
 - b. Be registered as a voter in the County for which they seek election,
 - c. Demonstrate active participation in Party programs three months prior to seeking nomination, provided National Executive Committee may for good cause, which shall be specifically documented, exempt an applicant from this requirement, subject to any conditions it may deem fit,
 - d. Meet the minimum requirements for member of the Senate as may be set out by the Elections Act and the Independent Electoral and Boundaries Commission.

- e. Is proficient in both English and Kiswahili languages,
- (ii) Candidates in respect of member of the senate nominations shall be required to provide the following:
- a. Duly completed Nomination Form in duplicate
 - b. Certified copy of national identity card or Passport,
 - c. Non- refundable fee as per provisions of schedule VII contained in the rules herein paid to **KENYA DEMOCRACY FOR CHANGE (KDC)** by a Bankers Cheque or deposited in the Party account
 - d. Certified copy of the Party's Gold membership certificate
 - e. Duly executed Code of Conduct and Pledge of Commitment Form
 - f. Evidence of active participation in Party activities three months prior to the application,

(iii) **DISQUALIFICATION FROM NOMINATION AS A CANDIDATE FOR ELECTION AS MEMBER OF THE SENATE**

A person is disqualified from being nominated as a member of the senate if the person:

- a. Is a State Officer or other Public Officer other than a Member of Parliament,
- b. Has, at any time within the five years immediately preceding the date of the election, held office as a member of the Independent Electoral Boundaries Commission,
- c. Is of unsound mind,
- d. Is an undischarged bankrupt,
- e. Is subject to a sentence of imprisonment of at least six months as at the date of nomination as a candidate,
- f. Has not been a citizen of Kenya for at least the ten years immediately preceding the date of the election, or
- g. Is found, in accordance with any Law to have misused or abused a state office or public office or in any way to have contravened the provisions of Chapter Six of the Constitution of Kenya.
- h. Is found to have planned, sponsored or participated in any violent activity intended to disrupt party nominations

28.5 NOMINATIONS FOR GUBERNATORIAL ELECTIONS

- (i) A person seeking nomination for elections as Governor shall fulfill the following requirements:
- a. Be registered as a voter in the County for which they seek Election
 - b. Be a Gold member of the Party,

- c. Be in possession of a degree certificate obtained from a university recognized in the Republic of Kenya,
- d. Demonstrate active participation in Party programs three months prior to seeking nomination, provided that the National Executive Committee may for good cause which shall be specifically documented, exempt an applicant from this requirement, subject to any conditions it may deem fit,
- e. Meet the minimum requirements for Gubernatorial Candidates as may be set out by the Elections Act and the Independent Electoral and Boundaries Commission.

(ii) An applicant for nomination shall furnish the following documents:

- a) Duly completed Nomination Form in duplicate.
- b) Certified Copy of national identity card or Passport,
- c) A Certified copy of KENYA DEMOCRACY FOR CHANGE (KDC) Gold Membership Certificate
- d) Non- refundable fee as per provisions of schedule VII contained in the rules herein paid to KENYA DEMOCRACY FOR CHANGE (KDC) by a Bankers Cheque or deposited in the Party account
- e) A copy of the degree certificate obtained from a university recognized in Republic of Kenya,
- f) Duly executed Code of Conduct and Pledge of Commitment Form
- g) Any other requirements under the Elections Act and Regulations made by the Independent Electoral and Boundaries Commission

(iii) Disqualification From Nomination As A Candidate For Gubernatorial Elections

A person is disqualified from being nominated as a candidate for election as a Gubernatorial if the person:-

- a. Is a State Officer or other Public Officer other than a Member of County Assembly,
- b. Has at any time within the five years immediately before the date of election held office as a member of the Independent Electoral Boundaries Commission or any Election Commission,
- c. Is of unsound mind,
- d. Is an undischarged bankrupt,
- e. Is serving a sentence of imprisonment of at least six months, or
- f. Has been found, in accordance with any law, to have misused or abused a State Office or Public Office or to have contravened any provision of Chapter Six of the Constitution of Kenya
- g. Is found to have planned, sponsored or participated in any violent activity intended to disrupt party nominations

28.6 NOMINATION OF A PRESIDENTIAL CANDIDATE

- (i) A person seeking nomination for Presidential elections shall fulfill the following requirements:
- a. Must be a Kenyan citizen by birth;
 - b. Is qualified to stand for election as a member of Parliament;
 - c. Must not owe allegiance to a foreign state;
 - d. Must be a registered voter;
 - e. Is a holder of a degree from a University recognized in Kenya;
 - f. Must not be a public officer or acting in any State of public office other than, President, Deputy President or Member of Parliament;
 - g. Must meet the moral and ethical requirements under the Leadership and Integrity Act;
 - h. Must not hold dual citizenship unless citizenship of the other country has been obtained by operation of law without capacity to opt out;
 - i. Must not be an undischarged bankrupt;
 - j. Must not be a person of unsound mind;
 - k. Must not be subject to a sentence of imprisonment of at least six months from the date of registration of candidates or date of elections;
 - l. Must not have been found to have abused or misused state or public office or contravened Chapter Six of the Constitution; and
 - m. Must not have been dismissed or removed from public office for contravening the provisions of Articles 75, 76, 77 and 78 of the Constitution.
 - n. Is a Gold member of the Party,
 - o. Is of high moral standing and integrity,
 - p. Meets the minimum requirements for Presidential Candidates as set out by the Elections Act and Independent Electoral and Boundaries Commission of Kenya, and the Constitution of the Republic of Kenya
- (ii) **Candidates in respect of Presidential nomination shall be required to provide the following:-**
- a. Duly completed Nomination Form in duplicate.
 - b. Certified Copy of national identity card or Passport,
 - c. Certified copy of **KENYA DEMOCRACY FOR CHANGE (KDC) Gold Membership Certificate**
 - d. Non- refundable fee as per provisions of schedule VII contained in the rules herein paid to **KENYA DEMOCRACY FOR CHANGE (KDC)** by a Bankers Cheque or deposited in the Party account

- e. A copy of the degree certificate obtained from a university recognized in Kenya,
- f. Duly executed Code of Conduct and Pledge of Commitment Form
- g. Meet all other requirements under the Elections Act and Regulations made by the Commission.

(iii) Disqualification from nomination as a candidate for Presidential Elections

A person is disqualified from being nominated as a candidate for election as a Presidential candidate if the person:-

- a. Is a State Officer or other Public Officer other than a Member of County Assembly,
- b. Has at any time within the five years immediately before the date of election held office as a member of the Independent Electoral Boundaries Commission or any Election Commission,
- c. Is of unsound mind,
- d. Is an undischarged bankrupt,
- e. Is serving a sentence of imprisonment of at least six months, or
- f. Has been found, in accordance with any law, to have misused or abused a State Office or Public Office or to have contravened any provision of Chapter Six of the Constitution of Kenya
- g. Is found to have planned, sponsored or participated in any violent activity intended to disrupt party nominations

RULE 29: NOMINATIONS PROCEDURES

29.1 NOMINATION FOR PARTY PRESIDENTIAL CANDIDATE

- i. The nomination for the Party Presidential Candidate shall be carried out by the National Delegates Convention Electoral College and Conducted by the National Elections Board
- ii. Voting at the National Delegates Convention Electoral College shall be by secret ballot or any other method acceptable to the delegates eligible to vote in an ordinary session of the National Delegates Convention;
- iii. The nominations shall be conducted by the National Elections Board who shall count and announce the results to the National Delegates Convention Electoral College.
- iv. Each Presidential Candidate shall be entitled to appoint Agents as shall be determined by the National Elections Board
- v. In the event that only one candidate presents him/herself for nomination, the National Elections Board shall present the said candidate to the National Delegates Convention Electoral College for endorsement.

29.2: PARTY NOMINATIONS FOR GUBERNATORIAL CANDIDATES

- i. The nomination for the party Gubernatorial candidate shall be carried out by the County Electoral College and Shall be Conducted by the National Elections Board
- ii. Voting at the County Electoral College delegates shall be by secret ballot or any other method acceptable to the delegates eligible to vote.
- iii. The County Returning Officer shall count and announce the results to the County electoral College delegates and transmit to the National Elections Board.
- iv. Each Gubernatorial Candidate shall be entitled to appoint Agents as shall be determined by the County Returning Officer.
- v. In the event that only one candidate presents him/herself for nomination, County Returning Officer shall present the candidate to the County electoral College delegates for endorsement, and transmit the name of the candidate to the National Elections Board.

29.3: PARTY NOMINATIONS FOR SENATORIAL CANDIDATES

- i. The nomination for the party Senatorial candidate shall be carried out by the County Electoral College and Shall be Conducted by the County Returning Officer
- ii. Voting at the County electoral College delegates shall be by secret ballot or any other method acceptable to the delegates eligible to vote.
- iii. The County Returning Officer shall count and announce the results to the County electoral College delegates and transmit to the National Elections Board.
- iv. Each Senatorial Candidate shall be entitled to appoint Agents as shall be determined by the County Returning Officer
- v. In the event that only one candidate presents him/herself for nomination, the National Elections Board shall present the candidate to the County electoral College delegates for endorsement, and transmit the name of the candidate to the National Elections Board.

29.4: PARTY NOMINATIONS FOR COUNTY MEMBER OF THE NATIONAL ASSEMBLY (WOMAN REPRESENTATIVE)

- i. The nomination for the party County Member of the National Assembly candidate shall be carried out by the County Electoral College and Shall be Conducted by the County Returning Officer
- ii. Voting at the County electoral College delegates shall be by secret ballot or any other method acceptable to the delegates eligible to vote.
- iii. The County Returning Officer shall count and announce the results to the County electoral College delegates and transmit to the National Elections Board.
- iv. Each County Member of the National Assembly Candidate shall be entitled to appoint Agents as shall be determined by the County Returning Officer
- v. In the event that only one candidate presents herself for nomination, the County Returning Officer shall present the candidate to the County Electoral College delegates for endorsement, and transmit the name of the candidate to the National Elections Board.

29.5 : PARTY NOMINATIONS FOR MEMBER OF THE NATIONAL ASSEMBLY

- i. The nomination for the party member of the National Assembly candidate shall be carried out by the Constituency Electoral College and Shall be Conducted by the Constituency Returning Officer
- ii. Voting at the Constituency Electoral College shall be by secret ballot or any other method acceptable to the delegates eligible to vote.
- iii. The Constituency Returning Officer shall count and announce the results to the Constituency Electoral College delegates and transmit to the County Returning Officer and National Elections Board.
- iv. Each member of the National Assembly Candidate shall be entitled to appoint Agents as shall be determined by the National Elections Board
- v. In the event that only one candidate presents him/herself for nomination, the National Elections Board shall present the said candidate to the Constituency Electoral College for endorsement.

RULE 29.6: NOMINATION PROCEDURES FOR MEMBER OF COUNTY ASSEMBLY,

- i. The nomination for the party candidate for the Member of the County Assembly elections shall be carried out by the Ward Electoral College and Shall be Conducted by the Presiding Officer
- ii. Voting at the Ward Electoral College shall be by secret ballot or any other method acceptable to the delegates eligible to vote.
- iii. The elections shall be conducted by the Presiding Officer and shall count and announce the results to the Ward Electoral College and transmit the same to the Constituency Returning Officer.
- iv. Each aspirant for nominations of the Member of the County Assembly Candidate shall be entitled to appoint Agents as shall be determined by the Presiding Officer
- v. In the event that only one candidate presents him/herself for nomination, the Presiding Officer shall present the said candidate to the Ward Electoral College for endorsement and transmit the name of the candidate to the Constituency Returning Officer

RULE 30: NOTICE FOR CONDUCTING PARTY NOMINATIONS

30.1 The National Elections Board shall issue a notice of the date and venue when the Party nominations shall be conducted by advertising in at least two media houses with National circulation,

30.2 VENUE

In the notice the National Elections Board shall indicate the date and venue of where each Electoral College shall conduct the party nominations

30.3 VOTER QUALIFICATIONS

- i. A person qualifies for registration as a voter at Party Elections if the person;
 - a. is an adult citizen
 - b. is not declared to be of unsound mind; and
 - c. Has not been convicted of an election offence during the preceding five years.
 - d. Meets the voter registration requirements set out in the Constitution of Kenya and Elections Act
- ii. Only Party members appearing in the electoral party register shall be legible to vote in the party nominations.
- iii. Party members shall be identified by their Party membership card and National Identification card.

RULE 31: PARTY REGISTER

The National Elections Board shall ensure the Election Officers in each Electoral College produce the Electoral College membership register at the venue for verification at least Seventy Two hours (72hrs) before the date of the Party nominations.

RULE 32: PROCEDURE FOR COUNTING, TALLYING AND ANNOUNCING

- 32.1** Voting under these Rules shall be by way of secret ballot or any other method of voting accepted by the voting delegates at the electoral college, where an office or vacancy is contested by more than candidate, the vote shall be decided by a simple majority.
- 32.2** Where only one candidate is seeking nomination, the returning officer shall at the close of the stipulated time of conducting the nominations declare the candidate elected or nominated to the office for which nomination or election was sort.
- 32.3** The Returning Officer at each electoral college shall count, tally and announce the results to the Electoral College before submitting to the National Elections Board.

RULE 33: ISSUANCE OF PARTY CERTIFICATES

- 33.1** The National Elections Board shall compile the certified list of successful party candidates and submit to the Secretary General and the National Chairperson as the authorized party signatories to sign and forward to the Independent Electoral and Boundaries Commission in accordance to Elections Act.
- 33.2** Upon receipt of the certified list of successful party candidates, the authorized party signatories shall issue a nomination certificate to the successful candidates

RULE 34: INTERNAL DISPUTE RESOLUTION MECHANISM AND TRIBUNALS

- 34.1** The National Executive Committee shall develop rules for the establishment of Internal Dispute Resolution Mechanisms in which the following provisions shall be considered;
 - a) The internal dispute resolution mechanism shall be independent of the Party Officials and institutions.
 - b) the procedure for dispute resolution shall be in writing
 - c) decisions of the dispute resolution shall be in writing
 - d) rules of natural justice shall apply
 - e) The composition of the members of the tribunal shall be of an odd number and decisions by simple majority.

- f) The Tribunal shall hear and determine all nomination disputes expeditiously and in any case no later than ninety days to the date of the General Elections.
- g) The party shall amicably resolve internal wrangles between members and party organs or among officials or dissatisfied aspirants by way of an internal dispute resolution mechanisms as prescribed in this Constitution or the Party Election and Nomination Rules.
- h) The resolution of disputes between the party and its coalition partners shall be as set out in the coalition Agreement

34.2 COUNTY APPEALS TRIBUNAL:

- i. There shall be established a County Appeals Tribunal in every County to be appointed by the National Elections Board and approved by the National Executive Committee at least 21 days before the start of party elections and nominations.
- ii. The County Appeals Tribunal shall be composed of five (5) members of the Party who shall be distinguished persons of good moral standing in society and of high integrity and its mandate shall be;
 - a. To determine appeals or disputes arising out of elections results of the poll, ward, constituency, county officials and nominations of the member of the county assembly.
 - b. The right of appeal shall be within forty eight hours (48) from the announcement of the results.
 - c. The appeal shall be in writing and duly signed by the appellant upon payment of a non-referable fee of Ten Thousand Kenyan Shillings (KSH 10,000/=) payable to the party.
 - d. The County Appeals Tribunal may in its discretion but for reasons recorded consider the appeal and determine it without the need to hear the appellant in person.
 - e. The County Tribunal shall hear and determine the appeal in accordance with the party constitution, party elections and nomination rules, the constitution of the republic of Kenya, the Elections Act, the Political Parties' Act and any other relevant laws within 48 hours of receipt of the appeal.

- f. The parties to the disputes shall be accorded adequate time to defend themselves. No party members shall be condemned unheard. All the dispute before the tribunal shall be handled expeditiously
- g. The quorum shall be three members
- iii. The appellant if dissatisfied with the decision of the County Tribunal may appeal to the Political Parties Dispute Tribunals.

34.3 NATIONAL APPEALS TRIBUNAL:

- i. There shall be established a National Appeals Tribunal to be appointed by the National Elections Board and approved by the National Executive Committee at least 21 days before the start of party elections and nominations
- ii. The National Appeals Tribunal shall be composed of five (5) members of the Party who shall be distinguished persons of good moral standing in society and of high integrity and its mandate shall be;
 - a. To determine appeals or disputes arising out of elections results of the National officials and the nominations of Presidential, Gubernatorial, Senatorial, County Member Of National Assembly, Member of National Assembly and Member Of The County Assembly.
 - b. No member of the National Appeals Tribunal shall be an official of the party or an aspirant.
 - c. The right of appeal shall be within forty eight hours (48) from the announcement of the results.
 - d. The appeal shall be in writing and duly signed by the appellant upon payment of a non-referable fee of Forty Thousand Kenyan Shillings (KSH 40,000/=) payable to the party.
 - e. The National Appeals Tribunal may in its discretion but for reasons recorded consider the appeal and determine it without the need to hear the appellant in person.
 - f. The National Appeals Tribunal shall hear and determine the appeal in accordance with the party constitution, party elections and nomination rules, the constitution of the republic of Kenya, the Elections Act, the Political Parties' Act and any other relevant laws within 48 hours of receipt of the appeal

- g. The parties to the disputes shall be accorded adequate time to defend themselves. No party members shall be condemned unheard. All the dispute before the tribunal shall be handled expeditiously
- h. The quorum shall be three members
- iii. The appellant if dissatisfied with the decision of the National Appeals Tribunal may appeal to the Political Parties Dispute Tribunals.

RULE 35: NON-COMPETITIVE NOMINATIONS

The National Executive Committee may, notwithstanding any other provision in these Rules issue a non-competitive nomination to a candidate, following a rationalization for such decisions.

35.1 PROCEDURE FOR NON-COMPETITIVE NOMINATION PROCESS

- i. Where non-competitive nomination is the method to be applied, the National Elections Board shall carry out a due diligence exercise to justify the use of this method.
- ii. The due diligence exercise shall take into consideration any of the following:
 - a. That there is consensus by candidates as set out above.
 - b. There is a confirmation that the aspirant is the only qualified candidate for the position that is the subject of the electoral exercise or stands elected.
 - c. Credible research has been carried out in regards to the relevant electoral area through a scientific survey conducted by a competent entity, to provide an evidence-based opinion that a particular candidate is best placed to deliver the relevant electoral seat for the Party.
 - d. That such a non-competitive nomination shall aid the Party to comply with the provisions of Article 81(b) of the Constitution of Kenya, 2010 as to gender thresholds provided that the candidate under consideration is qualified and capable of delivering the seat for the party.
- iii. That the party leadership has for compelling reasons recommended that it is in the best interest of the party to issue direct party nomination to certain candidates.

RULE 36: NOMINATION OF PARTY LISTS

36.1 NOTICE OF VACANT POSITIONS FOR PARTY LISTS

- i. Upon a resolution by the National Executive Committee, the National Elections Board shall advertise a Notice of invitation of not less than seven days (7 days) in at least two media platforms with National circulation for Party members who are interested for nominations for the Party Lists.
- ii. The qualifications and disqualifications prescribed for the Senate, Member of National Assembly and County Assembly shall apply to the Party List.
- iii. Interested party members shall apply for nominations in the Party List Nomination Application form as prescribed in Schedule V;
- iv. The National Elections Board shall vet all candidates as per these Rules, the Party Constitution, the Constitution of the Republic of Kenya, the Elections Act, the Political Parties, Act and any other relevant written laws within seven (7) days of receipt of the Party Lists nomination application form.
- v. In vetting an applicant, the National Elections Board shall take into consideration the following:
 - a) Demonstrated loyalty to the party, its leadership and organs.
 - b) The contribution of the candidate to the Party activities, programs and ideology.
 - c) Ability to represent the Party at the effectively for the nomination sort.
 - d) Ability to articulate and propagate Party policies and ideology.
 - e) Must be in good standing with the Party.
 - f) Shall have been a member of KDC for at least six months preceding the General elections
- vi. The Party Lists shall not contain a name of a candidate nominated for an election.
- vii. The county election board shall work in consultation with the national election board in identify candidates for the party list
- viii. The quorum for the national election board shall apply in discharging this mandate.

36.2 ELECTION TO PARTY LISTS

- i. The National Elections Board shall conduct the nominations for Party Lists elections for the National Assembly, the Senate and County Assemblies to ensure compliance with Article 90 of the Constitution of Kenya, 2010 and other applicable laws.

- ii. The Party Lists for the nomination of candidates prescribed in Article 90 of the Constitution of Republic Kenya to nominate candidates for the purpose of filling the category of seats specified under Articles 97 (1)(c), 98 (1)(b), (c), (d), and 177 (1)(b) and (c) of the Constitution of Kenya, 2010

36.3 PARTY LISTS FOR THE NATIONAL ASSEMBLY

The Party Lists for the National Assembly shall comprise of the Twelve (12) names in three lists, including:

- i. List 1 containing Two (2) women and Two (2) men, representing persons with disabilities in order of priority
- ii. List 2 containing Two (2) women and Two (2) men representing the youth in order of priority.
- iii. List 3 containing Two (2) women and Two (2) men, representing workers in order of priority.
- iv. The Party Lists shall alternate between women and men candidates with a woman being ranked first.

36.4 PARTY LISTS FOR THE SENATE

The Party Lists for the Senate shall comprise of Twenty (20) names in three lists, including:

- i. List 1 containing Sixteen (16) women in order of priority.
- ii. List 2 containing One (1) woman and One (1) man representing persons with disabilities in beginning with the woman
- iii. List 3 containing One (1) woman and One (1) man representing the youth in order of priority.
- iv. The Party Lists in (b) and (c) of this rule shall alternate between women and men candidates with a woman being ranked first.

36.5 COUNTY ASSEMBLY PARTY LISTS

- i. The Party list for the County Assembly (Marginalized Groups namely; youth women and young men, women and men with disability and women and men from ethnic and other minority groups) for each County shall have eight names of qualified marginalized groups nominees.

- ii. The County Assembly (Marginalized Groups) Party List shall be presented in the Zebra format where the names shall alternate between the women and men nominees with a woman's name ranking first.
- iii. The eight(3) nominees in the County Assembly (Marginalized Groups) Party List shall have at least three (3) youth (male) and three (3) youth (female) aged below thirty five years old (35), three (3) male and female persons with disabilities and two (2) male and female persons representing any other marginalized groups as may be applicable in the particular County.
- iv. The Party lists for each of the County Assemblies' (Gender Top Up) shall contain the number of qualified nominees necessary to be nominated to ensure that the County Assembly comprises not more than two thirds of either gender if the number of elected members in all the Wards in the particular County are of one gender.
- v. The County Assembly (Gender Top up) Lists shall be two, each containing an equal number of nominees; the first of women only and the second of men only. The nominees for the County Assembly (gender top-up) shall be drawn, in order of priority, from the list of the members of the gender that is below the One-Third Thresh hold after the Elections of the County Assembly members in the particular County. The number of nominees required for each of the County Gender Top Up lists shall be provided by the National Elections Board.

36.6 PROCEDURE FOR APPLICATION FOR NOMINATION TO THE PARTY LISTS

- i. Aspiring candidates for nominations to the Senate, Member of National Assembly, and Member of the County Assembly Party Lists shall submit to the National Elections Board, a duly filled application in the form set out in Schedule V.
- ii. The aspiring candidates shall in addition submit the following;
 - a. Signed Party code of conduct as prescribed in the Schedule IX and the electoral code of conduct
 - b. Certified copies of the candidate's party membership card, national identity card and/or valid passport;
 - c. certified copies of the candidate's academic qualifications from the relevant institutions;
 - d. Evidence of the candidate's participation in Party activities and programs.
 - e. a receipt or other evidence of payment of nomination fees to the Party's designated bank account, as provided for in the Party Lists Nomination Fees Schedule VIII.
 - f. Where an aspiring candidate intends to be nominated on the ground that the candidate is a person with disability, the candidate shall, in addition to the applicable requirements in these Rules, submit a certification confirming his or her registration with the National Council for Persons with Disabilities.

- g. A person who wishes to be nominated to represent the youth shall be a person who has attained the age of eighteen years but has not attained the age of thirty-five years and such person shall provide documentary proof of his or her age.
- iii. The National Elections Board reserves the right to verify the authenticity of any document submitted to it, with the relevant issuing entity and any person submitting false information shall automatically be disqualified as a party list candidate.

RULE 37: PARTY LISTS APPROVAL BY NATIONAL EXECUTIVE COMMITTEE

- 37.1** The National Elections Board shall present their recommendations of nominations to the Party Lists to the National Executive Committee for its approvals.
- 37.2** The National Executive Committee shall nominate and present a list of members to the Independent Electoral and Boundaries Commission in the category of Party Lists members in accordance with provisions of Section 34 of the Elections Act at least forty-five days before the date of the General election.
- 37.3** A Party List shall not be amended during the term of Parliament or the County Assembly, as the case may be, for which the candidates are elected.

RULE 38: CODE OF CONDUCT FOR POLITICAL PARTIES

- 1. Our political party shall, pursuant to Articles 91 and 92 of the Constitution and section 8 of this Act, subscribe and observe this code of conduct.
- 2. This code of conduct shall regulate the behavior of members and office holders of political parties, aspiring candidates, candidates and their supporters, promote good governance and eradicate political malpractices.
- 3. Political competition and co-operation shall be regulated under this code of conduct on the basis of rule of law and universally accepted best practices.
- 4. Our political party shall—
 - (a) promote policy alternatives responding to the interests, the concerns and the needs of the citizens of Kenya;
 - (b) respect and uphold the democratic process as they compete for political power so as to implement their policies;
 - (c) promote consensus building in policy decision making on issues of national importance;

- (d) develop and implement measures for the progressive realisation of representation and participation of the special interest groups in decision-making organs; and
- (e) implement the affirmative action programmes, policies and strategies relating to political representation contemplated under Article 27(6) of the Constitution.

5. Our political party shall—

- (a) respect the right of all persons to participate in the political process including youth, minorities and marginalized groups;
- (b) respect and promote gender equity and equality, human rights and fundamental freedoms; and
- (c) be tolerant and inclusive in all their political activities.

6. Our political party shall—

- (a) respect, uphold and defend the Constitution of Kenya;
- (b) respect and uphold this Act and any other written law relating to elections and political parties;
- (c) respect, uphold and defend their respective political party constitutions, political party election rules, political party nomination rules and any other political party rules and regulations developed and agreed upon in accordance with this code of conduct;
- (d) respect, uphold and promote human dignity, equity, social justice, inclusiveness and non-discrimination and protection of the marginalized;
- (e) respect, uphold and promote human rights and the rule of law;
- (f) promote national patriotism and national unity;
- (g) respect, uphold and promote democratic values and principles, performing inclusive participation of party members and accountable representation in governance for the development of the country;
- (h) respect, uphold and promote good governance, integrity, respect, tolerance, transparency and accountability;
- (i) promote cooperation in the political competition;
- (j) promote sharing and devolution of power and resources;
- (k) respect, uphold and promote democratic practices through regular free, fair and credible elections within the political party and among others have a democratically elected governing body and political party organs;

- (l) respect, uphold and promote democratic practices through free, fair and credible political party nominations;
- (m) respect, uphold and promote leadership and integrity as prescribed in the constitution of Kenya; and
- (n) perform transparency and accountability in all its legislation and regulations, structures, procedures and performance.

7. Our political party shall not—

- (a) engage in or encourage violence by its members or supporters;
- (b) engage in or encourage any kind of intimidation of opponents, any other person or any other political party;
- (c) engage in influence peddling, bribery or any other form of corruption;
- (d) accept or use illicit or illegal money;
- (e) accept or use public resources other than those allocated to the political party through the political party fund;
- (f) advocate hatred that constitutes ethnic incitement, vilification of others or incitement to cause harm;
- (g) obstruct, disrupt, break-up or in any other way whatsoever interfere with a meeting, rally or demonstration of another political party or its leadership;
- (h) establish or maintain a para-military force, militia or similar organization or having any links with such organizations; and
- (i) use state resources for partisan campaigns.

8. Our political party shall promote inter-party relations by—

- (a) ensuring free competition among political parties in respect of different political views and principles;
- (b) fostering trust and confidence through mechanisms for co-operation;
- (c) managing and mitigating political differences through constructive dialogue enhancing harmony among the parties; and
- (d) promoting national reconciliation and building national unity.

PART IV: GENERAL

RULE 39: PARTY REGISTER

- 39.1** Party elections and nominations shall be conducted using the Party's Register of Voters, which shall be derived from the KDC Party Members' Register, as certified by the Registrar of Political Parties
- 39.2** The Register of Voters shall comprise of—
- i. a poll management electoral college register in respect of every polling centre;
 - ii. Ward electoral college register in respect of each ward
 - iii. Constituency electoral college register in respect of each constituency
 - iv. County electoral college register in respect of each county
 - v. National Delegated Electoral college register comprising of the list of delegates to the National Delegates Convention
- 39.3** The National Elections Board shall ensure that these registers for purpose of conducting Party elections and nominations are at each Electoral College at least seven days before the date of the elections.
- 39.4** On the designated date of the voting each delegate at the Electoral College shall be identified by;
- i. National Identity card or Passport
 - ii. Party membership Card

RULE 40: WHERE ONLY ONE CANDIDATE IS DULY ELECTED

Where only one candidate is duly elected to an office or nominated as a party candidate for the general elections at the close of the party elections or nominations, that candidate shall stand duly elected and/or nominated

RULE 41: ELECTION AND NOMINATION MALPRACTICES

- 41.1** A party member shall be barred from by the National Elections Board in any Party Elections and nominations if the member;
- i. Without due authority of the party, makes prepares, prints or is in possession of a document or paper purporting to be a register of Party members,
 - ii. knowingly makes any false statement on, or in any application to be entered in the party register
 - iii. Corruptly influences a voter to vote or refrain from voting for any candidate.
 - iv. Before or during an election promises to reward a voter to vote in his/her favour or to refrain from voting for particular candidate

- v. A Party member shall be disqualified to vote at an election for the nomination of any candidate if he induces, influences or procures any other person to vote in an election knowing that the person is not entitled to vote in that election.
- vi. Any Party member shall be disqualified from voting in an election for the nomination of any candidate if he directly or indirectly in person or through another person on his behalf uses or threatens to use any force, whether physical or non-physical, violence including sexual violence, restraint, inflicts injury, harm or damage and induces or compels another party member to vote for a particular candidate during the elections or nomination.
- vii. If a candidate makes any gift, promissory note or offers money to an election official to favour them during the party elections or nominations.

41.2 BODY TO MONITOR/IDENTIFY/ ENFORCE ELECTORAL MALPRACTICES

The national election board shall identify, monitor and enforce any measure provided under the party constitution and election rules. The body shall work in consultation with relevant government agency

41.3 CONSEQUENCE OF ENGAGING IN ELECTORAL MALPRACTICES

Any member of the party or voter who engages in electoral malpractices shall be subjected to the following measures

- i. Disqualification from participating in the election
- ii. Suspension from participating in party activity
- iii. Subjecting to party disciplinary procedures

RULE 42: CAMPAIGN

- 42.1** The National Elections Board shall give a period of not less than fourteen days to campaign for all respective candidates to campaign for the various positions vied for.
- 42.2** All campaigns shall cease 48 hours before the polling date
- 42.3** No campaigns shall be permitted on the polling day.

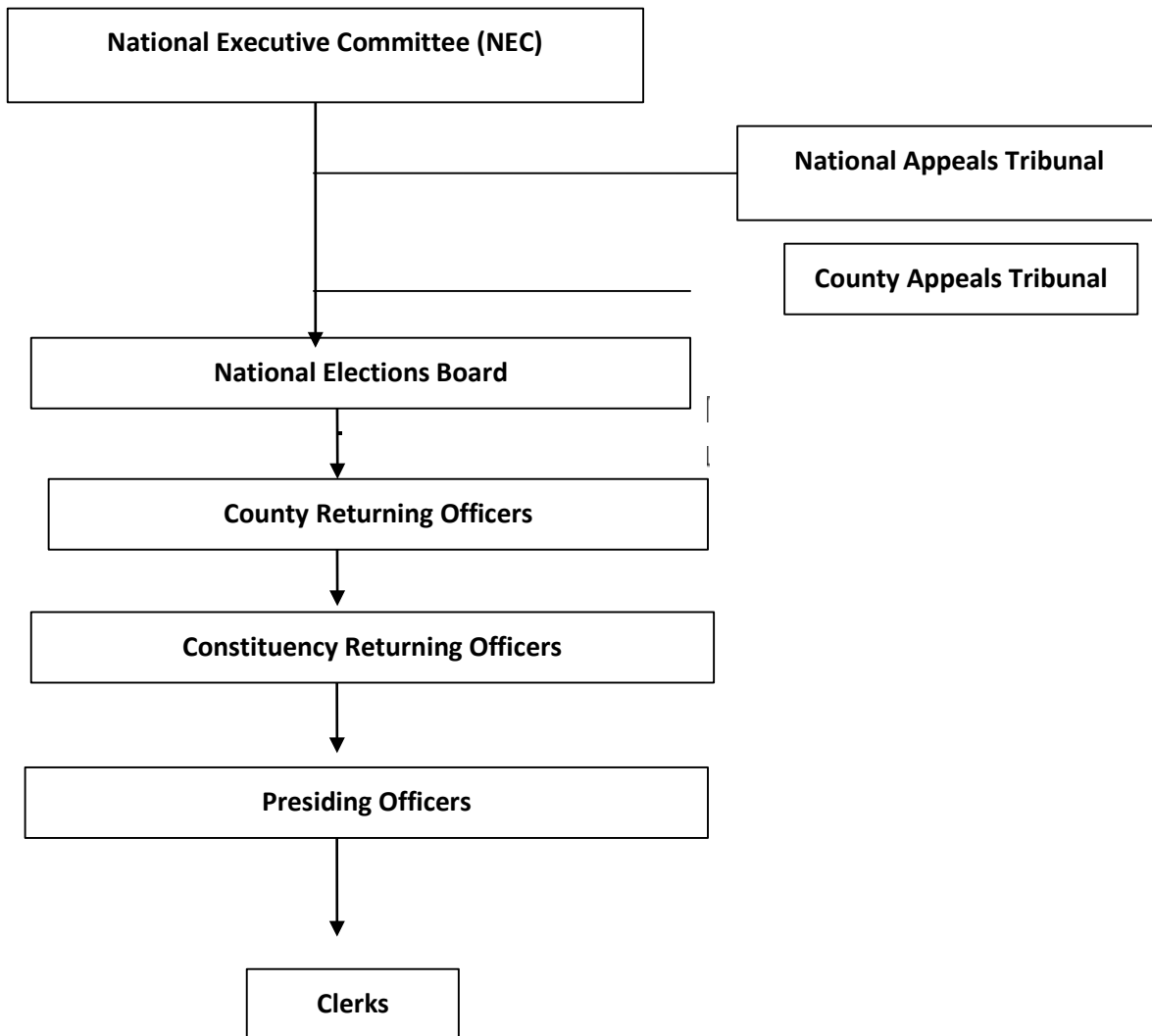
RULE 43: HOURS OF POLLING

The electoral college in each level shall convene to conduct the elections/ nominations not later than 0900am of the polling date and to conclude at least by 0500pm of the same date.

RULE 44: RETENTION AND PUBLIC INSPECTION OF DOCUMENTS

All elections documents and materials shall be archived for a period of six months at the Party Headquarters.

SCHEDULE I: ELECTIONS AND NOMINATION STRUCTURES



SCHEDULE II: THE PARTY ELECTIONS APPLICATION FORM

KENYA DEMOCRACY FOR CHANGE **APPLICATION FOR PARTY ELECTIONS CANDIDATE** *(To Be Submitted in Duplicate)*

To:
The Secretary
The National Elections Board
KENYA DEMOCRACY FOR
CHANGE
P.O BOX XXXXXXXXXX
MOMBASA

PART I: CANDIDATE'S DETAILS

I, do hereby apply to contest
in the KENYA DEMOCRACY FOR CHANGE Elections for
Position in County/Constituency/Ward/Polling Station *(tick the appropriate
option)* in the upcoming Party Elections

1. National Identity Card / Passport No
2. Party Membership No
3. Physical Address
4. Postal Address.....
5. Mobile No.
6. Email
7. Polling Station
8. Ward
9. Constituency
10. County

PART II: PARTICIPATION IN PARTY PROGRAMMES AND ACTIVITIES

11. How long have you been a member of the KENYA DEMOCRACY FOR CHANGE
.....
.....
12. Provide evidence of your participation in the party affairs.
.....
13. Are you a Party member in good standing? If yes support with evidence
.....
14. Have you ever had any Disciplinary proceedings by the Party?
.....
15. Are you a person living with disability? If yes attach your certificate of
registration with the National Council for Persons with Disabilities (NCPWD).
.....
16. Do you consider yourself marginalized?
.....

PART III: LEADERSHIP AND INTEGRITY

17. Are you a State and/or Public Officer? If you have recently resigned from a state
or public officer attach appropriate evidence of resignation.

.....
18. Have you ever been declared bankrupt?
.....

19. Have your ever been jailed or currently serving a prison term?
.....

PART IV: SUPPORTING DOCUMENTS

Please attach the following documents to your application;

- i. Certified Party Membership Card/Certificate
- ii. A certified copy of your National Identification Card
- 1) A certified copy of your KENYA DEMOCRACY FOR CHANGE Gold Membership
- 2) Duly completed, signed and commissioned Code of Conduct;

Dated At This Day of 20.....

SIGNATURE.....

SCHEDULE III

KENYA DEMOCRACY FOR CHANGE **APPLICATION FORM FOR NOMINATION AS A PARTY PRESIDENTIAL CANDIDATE** *(To Be Submitted in Duplicate)*

To:
The Secretary
The National Elections Board
KENYA DEMOCRACY FOR
CHANGE
P.O BOX XXXXXXXXX
MOMBASA

PART I: CANDIDATE'S DETAILS

I,..... do hereby apply to be nominated as
the KENYA DEMOCRACY FOR CHANGE Presidential candidate to contest in the forthcoming
General Elections

1. National Identity Card / Passport No
2. Party Membership No
3. Physical Address
4. Postal Address.....
5. Mobile No.
6. Email
7. Polling Station
8. Ward
9. Constituency
10. County

PART II: PARTICIPATION IN PARTY PROGRAMMES AND ACTIVITIES

11. Provide evidence of your participation in the party affairs.
.....
.....
12. Demonstrate your ability to mount a successful campaign.....
.....
13. How long have you been a member of the KENYA DEMOCRACY FOR CHANGE?
.....
14. Are you a Party member in good standing? If yes support with evidence
.....
15. Are you a Party Official?
.....
16. Have you ever had any Disciplinary proceedings by the Party?
.....
17. Are you a person living with disability? If yes attach your certificate of registration
with the National Council for Persons with Disabilities (NCPWD).
.....

18. Do you consider yourself marginalized?
.....

PART III: LEADERSHIP AND INTEGRITY

19. Are you a State and/or Public Officer? If you have recently resigned from a state or public officer attach appropriate evidence of resignation.
.....

20. Have you at any time within the five years immediately preceding the date of this Application, held office as a member of the Independent Electoral and Boundaries Commission?
.....

21. How long have you been a Citizen of Kenya immediately preceding the date of this Application?

22. Have you ever been declared bankrupt?
.....

23. Have you ever been jailed or currently serving a prison term?
.....

PART IV: SUPPORTING DOCUMENTS

Please attach the following documents to your application;

- Detailed Curriculum Vitae
- Certified copies of your educational qualifications
- Evidence of payment of the Party Lists Nomination Fees
- A certified copy of your National Identification Card
- A certified copy of your KENYA DEMOCRACY FOR CHANGE Gold Membership
- Duly completed, signed and commissioned Code of Conduct;

Dated At This Day of 20.....

SIGNATURE

FULL NAME OF CANDIDATE

For Official Use only

Received at the NEB Offices by: Date
.....

Documents Checklist	Availed	Not Availed	Remarks
Copy of Certified KDC Gold Membership Certificate			
Copy of Certified National Identification Card or Passport			
Certified Passport four (4) photos of the Candidate			
Police Clearance Certificate/Certificate of Good Conduct			
Curriculum Vitae (maximum one page)			
Code of Conduct- signed and Commissioned			

Proof of Payment/Payment Receipt for the application fee			
Certified Copies of educational qualifications			
EACC Clearance Certificate			
KRA Tax Clearance Certificate			
National Council of Persons with Disability Identification Card (as applicable)			

Approved By: Date

SCHEDULE IV:

KENYA DEMOCRACY FOR CHANGE
APPLICATION FORM FOR NOMINATION AS A PARTY CANDIDATE
(To Be Submitted in Duplicate)

To:
The Secretary
The National Elections Board
KENYA DEMOCRACY FOR
CHANGE
P.O BOX XXXXXX
MOMBASA

PART I: CANDIDATE'S DETAILS

I,..... do hereby apply to be nominated as the KENYA DEMOCRACY FOR CHANGE candidate to contest in the forthcoming General Elections/By-Election inCounty/Constituency/Ward, *(tick the appropriate option)*.

1. National Identity Card / Passport No
2. Party Membership No
3. Physical Address
4. Postal Address.....
5. Mobile No.
6. Email
7. Polling Station
8. Ward
9. Constituency
10. County

PART II: PARTICIPATION IN PARTY PROGRAMMES AND ACTIVITIES

11. Provide evidence of your participation in the party affairs. (Use separate sheet of paper if necessary)
12. How long have you been a member of the KENYA DEMOCRACY FOR CHANGE?
13. Are you a Party member in good standing? If yes support with evidence
14. Are you a Party Official?
15. Have you ever had any Disciplinary proceedings by the Party?

16. Are you a person living with disability? If yes attach your certificate of registration with the National Council for Persons with Disabilities (NCPWD).

17. Do you consider yourself marginalized?

PART III: LEADERSHIP AND INTEGRITY

18. Are you a State and/or Public Officer? If you have recently resigned from a state or public officer attach appropriate evidence of resignation.

19. Have you at any time within the five years immediately preceding the date of this Application, held office as a member of the Independent Electoral and Boundaries Commission?

20. How long have you been a Citizen of Kenya immediately preceding the date of this Application?

21. Have you ever been declared bankrupt?

22. Have you ever been jailed or currently serving a prison term?

PART IV: SUPPORTING DOCUMENTS

Please attach the following documents to your application;

1. Detailed Curriculum Vitae
2. Certified copies of your educational qualifications
3. Evidence of payment of the Party Lists Nomination Fees
4. A certified copy of your National Identification Card
5. A certified copy of your KENYA DEMOCRACY FOR CHANGE Gold Membership
6. Duly completed, signed and commissioned Code of Conduct;

Dated At This Day of 20.....

SIGNATURE

.....

FULL NAME OF CANDIDATE

For Official Use only

Received at the NEB Offices by: Date

Documents Checklist	Availed	Not Availed	Remarks
Copy of Certified KDC Gold Membership Certificate			
Copy of Certified National Identification Card or Passport			
Certified Passport four (4) photos of the Candidate			
Police Clearance Certificate/Certificate of Good Conduct			

Curriculum Vitae (maximum one page)			
Code of Conduct- signed and Commissioned			
Proof of Payment/Payment Receipt for the application fee			
Certified Copies of educational qualifications			
EACC Clearance Certificate			
KRA Tax Clearance Certificate			
National Council of Persons with Disability Identification Card (as applicable)			

Approved By: Date

SCHEDULE V: THE PARTY LIST NOMINATION APPLICATION FORM

KENYA DEMOCRACY FOR CHANGE **APPLICATION FORM FOR NOMINATION AS A PARTY LIST CANDIDATE** *(To Be Submitted in Duplicate)*

To:
The Secretary
The National Elections Board
KENYA DEMOCRACY FOR
CHANGE
P.O BOX XXXXXX
MOMBASA

PART I: CANDIDATE'S DETAILS

I, do hereby apply to be nominated to the KENYA DEMOCRACY FOR CHANGE, Senate / National Assembly / County Assembly Party List, *(tick the appropriate option)* to represent women/person with disability/youth/workers, *(tick the appropriate option)*.

1. National Identity Card / Passport No
2. Party Membership No
3. Physical Address
4. Postal Address.....
5. Mobile No.
6. Email
7. Polling Station
8. Ward
9. Constituency
10. County

PART II: PARTICIPATION IN PARTY PROGRAMMES AND ACTIVITIES

11. Provide evidence of your participation in the party affairs. (Use separate sheet of paper if necessary)
.....
12. How long have you been a member of the KENYA DEMOCRACY FOR CHANGE?
13. Are you a Party member in good standing? If yes support with evidence
.....
14. Are you a Party Official?
.....
15. Have you ever had any Disciplinary proceedings by the Party?
.....

16. Are you a person living with disability? If yes attach your certificate of registration with the National Council for Persons with Disabilities (NCPWD).

17. Do you consider yourself marginalized?

PART III: LEADERSHIP AND INTEGRITY

18. Are you a State and/or Public Officer? If you have recently resigned from a state or public officer attach appropriate evidence of resignation.

19. Have you at any time within the five years immediately preceding the date of this Application, held office as a member of the Independent Electoral and Boundaries Commission?

20. How long have you been a Citizen of Kenya immediately preceding the date of this Application?

21. Have you ever been declared bankrupt?

22. Have your ever been jailed or currently serving a prison term?

PART IV: SUPPORTING DOCUMENTS

Please attach the following documents to your application;

1. Detailed Curriculum Vitae
2. Certified copies of your educational qualifications
3. Evidence of payment of the Party Lists Nomination Fees
4. A certified copy of your National Identification Card
5. A certified copy of your KENYA DEMOCRACY FOR CHANGE Gold Membership
6. Duly completed, signed and commissioned Code of Conduct;

Dated At This Day of 20.....

SIGNATURE

For Official Use only

Received at the NEB Offices by: Date

Documents Checklist	Availed	Not Availed	Remarks
Copy of Certified KDC Gold Membership Certificate			
Copy of Certified National Identification Card or Passport			
Certified Passport four (4) photos of the Candidate			
Police Clearance Certificate/Certificate of Good Conduct			
Curriculum Vitae (maximum one page)			

Code of Conduct- signed and Commissioned			
Proof of Payment/Payment Receipt for the application fee			
Certified Copies of educational qualifications			
EACC Clearance Certificate			
KRA Tax Clearance Certificate			
National Council of Persons with Disability Identification Card (as applicable)			

Approved By: Date

SCHEDULE VI: ELECTION FEES

A. NATIONAL LEVEL

	POSITION	AMOUNT (KSH)
1.	Party Leader	100,000/=
2.	Deputy Party Leader	70,000/=
3.	National Chairperson	60,000/=
4.	Deputy National Chairperson	50,000/=
5.	Secretary General	55,000/=
6.	National Treasurer	50,000/=
7.	National Organizing Secretary	50,000/=
8.	National Woman Leader	10,000/= (Affirmative)
9.	National Youth Leader	10,000/=
10.	Secretary Special Interests Group	10,000/= SIG
11.	Secretary Persons with Disability	10,000/= SIG
12.	Director of Campaigns and Political affairs	30,000/=

B. COUNTY LEVEL

		POSITION	AMOUNT (ksh)
1.	COUNTY LEVEL	County Chairperson	5000/=
2.		County Deputy Chairperson,	4000/=
3.		County Secretary,	4000/=
4.		County Treasurer,	4000/=
5.		County Organizing Secretary, ,	4000/=
6.		County Woman leader,	500/= (affirmative)
7.		County Youth leader,	500/=
8.		County Secretary special interest Groups	500/= (SIG)
9.		County Secretary disability	500/= (SIG)
10.	CONSTITUENCY	Constituency Chairperson	4000/=
11.		Constituency Deputy Chairperson	3000/=
12.		Constituency Secretary	3000/=
13.		Constituency Treasurer	3000/=
14.		Constituency Organizing Secretary	3000/=
15.		Constituency Woman Leader	300/= (affirmative)
16.		Constituency Youth Leader	300/= (SIG)
17.		Constituency Secretary special interest group	300/= (SIG)
18.		Constituency Secretary for disability	300/= (SIG)
19.	WARD	Ward Chairperson	2000/=
20.		Ward Deputy Chairperson	1000/=
21.		Ward Secretary	1000/=
22.		Ward Treasurer	1000/=
23.		Ward Organizing Secretary	1000/=
24.		Ward Woman Leader	200 (Affirmative)
25.		Ward Youth	200/= (SIG)
26.		Ward Secretary Special interest group	200/= (SIG)
27.		Ward Secretary Disability	200/= (SIG)
28.	POLLING STATION	All Positions	NIL

SCHEDULE VII: CANDIDATE NOMINATION FEES

	CANDIDATE	AMOUNT (KSH)	SIG (KSH)	AFFIRMATIVE (KSH)
1.	Presidential Candidate	600,000/=	400,000/=	400,000/=
2.	Gubernatorial	300,000/=	250,000/=	250,000/=
3.	Member of the Senate	200,000/=	150,000/=	150,000/=
4.	County Member of Parliament (Woman Representative)	75,000/=	75,000/=	75,000/=
5.	Member of National Assembly	100,000/=	75,000/=	75,000/=
6.	Member of County Assembly	20,000/=	10,000/=	10,000/=

SCHEDULE VIII: PARTY LISTS NOMINATION FEES

	CANDIDATE	AMOUNT (KSH)	SIG	AFFIRATI VE
1)	Member of the Senate	200,000/=	150,000/=	150,000/ =
2)	Member of National Assembly	100,000/=	75,000/=	75,000/=
3)	Member of County Assembly	20,000/=	10,000/=	10,000/=

SCHEDULE IX

KENYA DEMOCRACY FOR CHANGE CODE OF CONDUCT

I, an aspiring candidate forin County /Ward /Constituency (*tick appropriate option*); do hereby subscribe to the KENYA DEMOCRACY FOR CHANGE Code of Conduct and solemnly declare that—

1. I will at all times respect, uphold and defend the Constitution of the Republic of Kenya, the Election Act and Political Parties Act and any other written law relating to elections and political parties;
2. I shall respect, uphold and defend the **KENYA DEMOCRACY FOR CHANGE, Constitution**, Election and Nomination Rules, party manifesto and any other party rules and regulations agreed upon in accordance with this code of conduct;
3. I pledge my loyalty to the KENYA DEMOCRACY FOR CHANGE
4. I will at all times abide with this code of conduct so as to promote good governance, preserve and protect the good image of the party;
5. I shall promote the party policy, programs and ideology
6. I shall respect, cooperate and uphold the democratic rights of other members in competition for political power so as to implement their policies;
7. I shall respect the promotion of consensus building in policy decision making on issues of national importance that affect the party;
8. I shall respect the right of all persons to participate in the political process including women, the youth, minorities and marginalized groups;
9. I shall respect and promote gender equity and equality and affirmative action
10. I shall respect and promote human rights, fundamental freedoms and the rule of law;
11. I will at all times be tolerant and inclusive in all my political activities.
12. I shall respect, uphold and promote human dignity, equity, social justice, inclusiveness and non-discrimination and protection of the marginalized;
13. I shall respect, uphold and promote National unity, patriotism, democratic values and principles, and accountable representation in governance for the development of Kenya;
14. I shall respect, uphold and promote good governance, integrity, tolerance, transparency and accountability;
15. I shall respect all party organs and the Party leadership;
16. I shall not use my official position in the party to advance my personal interest where I am one of the Party aspirants for the Party Elections or Nominations; nor for purposes of intimidating my political opponents and competitors in the party including denying them opportunities to participate in party activities.

17. I shall not use my position as a party Official to engage in partisan party politics for the campaigns in favour of some and against other party aspirants during the Party campaigns in the Party Elections or Nominations

18. I shall uphold and promote the principle of regular free, fair and credible elections within the party organs;

19. I shall respect, uphold and promote the principle of leadership and integrity as enshrined in the Constitution of the Republic of Kenya;

20. I commit to:

- i. At all times use constructive dialogue to manage and mitigate political differences;
- ii. Promote national reconciliation and building national unity;
- iii. promote gender equality
- iv. promote ethnic tolerance;
- v. promote cultural diversity;
- vi. promote the fair representation of special interest groups
- vii. Take all reasonable steps to protect election officers in their course of duty;
- viii. Take necessary and reasonable steps to instill discipline as a party candidate, in my agents, representatives and supporters;
- ix. Make monthly contributions towards the financing of party operations once elected
- x. Adhere to the party programmes and policies for the entire duration that I shall be a member of the party;
- xi. condemn, avoid and take steps to prevent violence and intimidation
- xii. Respect the outcome of electoral processes conducted by the Party;
- xiii. Support only the candidates nominated by the Party to represent it General and/or By Elections;
- xiv. Promote mutual respect to members at all levels

21. Further I shall not;

- i. Engage in or encourage violence by my supporters or party members
- ii. Engage in or encourage any kind of intimidation of my opponents, any other person or any other political party;
- iii. Engage in influence or peddling falsehoods, bribery or any other form of corruption including falsely receiving monies through empty promises to influence the issuing of Party nomination and / or election certificates.
- iv. Accept or use illicit or illegal money;
- v. Accept or use public or state resources for partisan campaigns , other than those allocated to the political party through the political party fund;
- vi. Advocate incitement, hatred that constitutes ethnic incitement, vilification of others to cause harm;
- vii. Obstruct, disrupt, break-up or in any other way whatsoever interfere with a meeting, Campaign rally or demonstration of another political party, or its leadership;
- viii. Establish or maintain a para-military force, militia or similar organization or having

any links with such organizations;

- ix. Engage in violence, intimidation in language or action that might lead to violence or intimidation against other candidates, voters, Party election officers, Party officials or members of the National Elections Board
- x. Allow offensive weapons to be carried at political meetings, voting stations and party offices
- xi. Publish or report false, defamatory or inflammatory allegations about political opponents;
- xii. Prevent eligible voters from having access to political opponents;
- xiii. Bribe eligible voters;
- xiv. Abuse positions of power or privilege;
- xv. Discriminate on the basis of race, sex, ethnicity, social class or religion.
- 22. **I affirm the rights** of all participants in this election to—
 - i. express divergent political opinions;
 - ii. debate and contest the policies and programmes of other parties;
 - iii. canvass freely for membership and support from voters;
 - iv. subject to the Public Order Act (Cap. 56) hold public meetings;
 - v. attend public meetings convened by others;
 - vi. distribute non-offensive electoral literature and campaign materials;
 - vii. publish and distribute non-offensive notices and advertisements;
 - viii. erect non-offensive banners, placards and posters;
 - ix. remove all banners, placards and posters erected during the election period;
 - x. promote free electoral campaigns by all lawful means;

I will abide by the Independent Elections and Boundaries Commission rules and regulations

23.

- i. Any member who evidently defaults on the above shall be subject to the provisions of the Party Constitution be subjected to internal Party disciplinary procedures and the Penalties as stipulated in the Independent Electoral and Boundaries Commission code of conduct;
- ii. In the exercise of the powers of the Party's internal disciplinary procedures, the following determinations may be applicable:
 - a. Suspension from the Party.
 - b. Denial by KENYA DEMOCRACY FOR CHANGE of its ticket for candidature.
 - c. Denial of United Super Alliance elective leadership.
 - d. If the default borders on criminal offence, the party shall hand over the case to the relevant State machinery .

This declaration is made to the best of my knowledge, information and belief.

DATED THIS DAY OF.....20.....

Signed by Said:

Name of Candidate

Signature

In the presence of;

.....

COMMISSIONER FOR OATHS/MAGISTRATE

For Official Use only

Received at the NEB Offices by: Date.....

Approved By Date